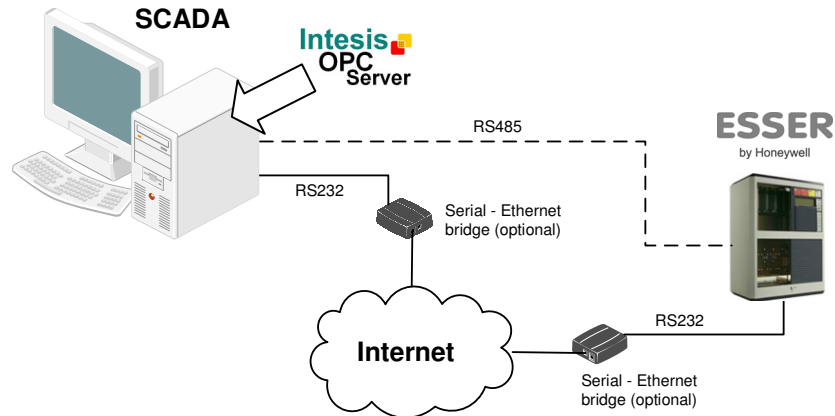


Order Code: IS-OPC-ESSER



OPC Server for integration of ESSER 8007/8008 fire panels.

This gateway allows to monitor the points of the ESSER panel from any SCADA or monitoring software with OPC client driver.

Main features

- Through the user interface, it is allowed to simulate the status of the OPC items without the need to be physically connected to the panel.

OPC features

- OPC Data Access 1.0a and 2.0.

ESSER features

- Capacity of up to 30,000 OPC items.
- No limit in number of panels, the zone numbers are universal.
- Each item corresponds to a single element of the panel: detector, output or zone.
- Indication of communication error with the panel.
- IDT protocol through RS485 or RS232 connection (TTY board required).
- An RS232 or RS485 port in the PC is needed to connect to the panel.
- Each element to detect is defined in a table indicating zone number, output or detector number, and type of element: detector, output or zone.
- 3 general states of the panel in independent OPC items.
- The value offered per each OPC item reflects the state of the element associated in the panel, the possible values are from 0-Normal, 1-Alarm... to 7-TEST.
- Commands toward the panel are allowed for reset, disconnect and test the elements.

Intesis OPC Server is a software package for Windows™ operating systems.

The information in this document may change without preadvise.