

 **IntesisBox[®] Modbus Server**
DALI

User's manual

Issue Date: 2011/07/20
r0 eng

© Intesis Software S.L. All Rights Reserved.

Information in this document is subject to change without notice. The software described in this document is furnished under a license agreement or nondisclosure agreement. The software may be used only in accordance with the terms of those agreements. No part of this publication may be reproduced, stored in a retrieval system or transmitted in any form or any means electronic or mechanical, including photocopying and recording for any purpose other than the purchaser's personal use without the written permission of Intesis Software S.L.

Intesis Software S.L.
Milà i Fontanals, 1 bis - 1^o
08700 Igualada
Spain

TRADEMARKS

All trademarks and tradenames used in this document are acknowledged to be the copyright of their respective holders.

Gateway for the integration of DALI ballast devices into Modbus control systems.

Order code:

IBOX-MBS-DALI

INDEX

1.	IntesisBox Modbus Server – DALI Description	5
1.1	DALI interface.....	6
1.2	Modbus interface.....	7
2.	Installation and quick-setup	11
2.1	IntesisBox hardware	11
2.2	Quick-setup.....	12
2.2.1	DALI connection setup	12
2.2.2	Ethernet connection setup.....	12
3.	Editing the configuration project for DALI	14
3.1	IntesisBox Configuration Window	14
3.2	Switching from Offline to Online mode	14
3.3	Configuration of short addresses for DALI ballasts	15
3.4	Ballast configuration values	18
3.5	Modbus configuration.....	20
4.	Mechanical & electrical characteristics	22
5.	Dimensions	23

1. IntesisBox Modbus Server – DALI Description

This document describes the integration of DALI ballasts in Modbus compatible devices and systems, with the use of *IntesisBox Modbus Server – DALI* device.

The ending of this device is:

- Providing a DALI physical channel with the necessary bus voltage (about 15V) and current regulation (max. 250mA).
- Setting the proper configuration values of the DALI ballasts (addresses, groups, max/min levels,...).
- Performing control and monitoring of the DALI ballasts in the DALI bus from a Modbus-based control system or device, so that the ballasts become part of the own Modbus system.

A configuration software tool, *LinkBoxMB*, is provided with IntesisBox, allowing to perform all setup tasks related to configuration of DALI ballasts, setting needed Modbus parameters (IP address, TCP port,...) as well as providing basic monitoring of the integration at setup time.

Once set up, the gateway acts as a Modbus Server device in its Modbus interface, allowing other Modbus client devices reading or writing its internal Modbus registers. These registers provide control of the DALI ballasts connected to IntesisBox.

This document assumes that the user is familiar with Modbus and DALI technologies and their technical terms.

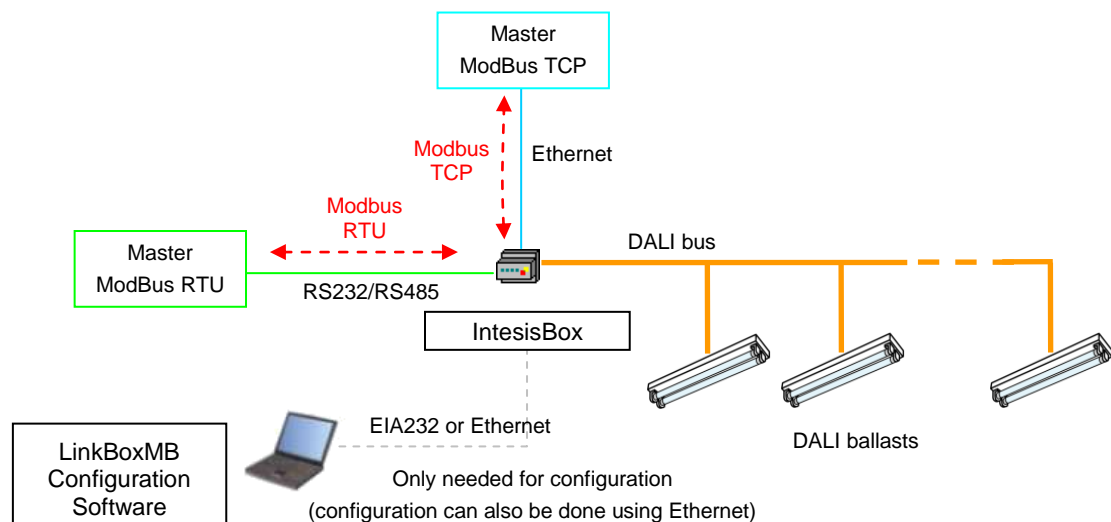


Figure 1 - Integration of DALI ballasts into Modbus using IntesisBox Modbus Server - DALI

1.1 DALI interface

DALI (Digitally Addressable Lighting Interface) is a standard defining a set of functionalities and requirements to be fulfilled by lighting ballasts. DALI ballasts communicate as well using the same protocol (DALI protocol), defined in the standard and supported by IntesisBox.

From a functional point of view, DALI ballasts provide following features:

- Digital control of actual arc power level (dim level)
 - Controllable either individually, or by previously defined groups of ballasts.
 - Set to arbitrary power/dim levels between OFF and 100%, or previously defined "preset" levels (scenes).
 - Using predefined fade rates/times upon power level change.
- Reporting of their actual status
 - Mainly for detecting failure conditions of the ballast or the installation.

A single DALI channel supports up to 64 ballasts, being this one the maximum number of individual ballasts that can be integrated with a single IntesisBox.

The DALI channel needs a power source, which will be provided by IntesisBox itself. As per the requirements of the standard, nominal bus voltage provided by IntesisBox is 15V, and has a current limiter of 240/250mA.

Each DALI ballast has an own permanent storage memory, where it stores its own configuration values. These values can be read, set and changed using IntesisBox at setup time. They are the following:

- Short Address (Individual address / Address for individual control)
- Random Address (Unique address providing a way of addressing a ballast without assigned individual/short address)
- Physical Minimum Level (read-only/defined by ballast manufacturer)
- Minimum Level
- Maximum Level
- Power-on Level
- System Failure Level
- Fade Rate
- Fade Time
- Group membership (a DALI channel can have up to 16 groups and each ballast can belong to any number of them at the same time)
- Level for scene 0...15 (up to 16 scenes/preset dim levels can be configured within each ballast)

Configuration of all ballast parameters can be done with IntesisBox, using *LinkBoxMB* software configuration tool. Usage of this tool is explained in detail in the *LinkBoxMB User's Manual*.

Information on DALI technology and a list of existing ballast manufacturers can be found at AG DALI association's website (www.dali-ag.org).

1.2 Modbus interface

DALI ballasts connected to IntesisBox are accessible by means of its Modbus server interface.

Each DALI ballast is abstracted at Modbus side as a set of Modbus registers. The value they represent is always accessed in IntesisBox by means of its Modbus register.

ModBus functions 03 or 04 (read holding registers and read input registers) must be used to read Modbus registers.

ModBus function 06 (Single Multiple Holding Registers) must be used to write Modbus registers.

If poll records are used to read or write more than one register, it is necessary that the range of addresses requested contains valid addresses, if not the corresponding ModBus error code will be returned.

All the registers are of 16 bit, and its content is expressed in MSB..LSB.

ModBus error codes are fully supported, they will be sent whenever a not valid Modbus action or address is required.

For each ballast, following is the list of its related Modbus registers:

Point name	Description	Signal	Point #
Dali Dxx Sts	Byte value representing ballast xx status $b_7...b_0$ <ul style="list-style-type: none"> ▪ Bit b_0: <i>Ballast failure</i> <ul style="list-style-type: none"> ○ 0: Ballast is OK ○ 1: Ballast is in failure ▪ Bit b_1: <i>Lamp failure</i> <ul style="list-style-type: none"> ○ 0: Lamp is OK ○ 1: Lamp is in failure ▪ Bit b_2: <i>Lamp arc power on</i> <ul style="list-style-type: none"> ○ 0: Lamp is OFF ○ 1: Lamp is ON ▪ Bit b_3: <i>Limit error</i> <ul style="list-style-type: none"> ○ 0: Last requested arc power cmd between MIN and MAX level (or OFF) ○ 1: Last requested arc power cmd is out of MIN/MAX level range ▪ Bit b_4: <i>Fade running</i> <ul style="list-style-type: none"> ○ 0: No fade is running (fade is ready) ○ 1: Fade is running ▪ Bit b_5: <i>Reset state</i> <ul style="list-style-type: none"> ○ 0: No reset state ○ 1: Reset state (factory configuration values in ballast) ▪ Bit b_6: <i>Missing short address</i> <ul style="list-style-type: none"> ○ 0: Short address is programmed ○ 1: Missing short address ▪ Bit b_7: <i>Power failure</i> <ul style="list-style-type: none"> ○ 0: No arc power ctrl command received after power-up ○ 1: Arc power control command received after power-up 	R	$(4*\mathbf{xx})+5$
Dali Dxx PwrLvl	Current arc power level reported by ballast xx <ul style="list-style-type: none"> ▪ 0% (off) ... 100% / MAX level 	R	$(4*\mathbf{xx})+6$
Dali Dxx PwrSet	Requested arc power level on ballast xx <ul style="list-style-type: none"> ▪ 0% (off) ... 100% / MAX level 	RW	$(4*\mathbf{xx})+7$
Dali Dxx Cmd	Requested command on ballast xx <ul style="list-style-type: none"> ▪ 0 – Set Arc Power Off ▪ 1 – Arc Power 100% ▪ 2 – Step Up ▪ 3 – Step Down ▪ 10 – Set Minimum Arc Power Level¹ ▪ 11 – Set Maximum Arc Power Level¹ ▪ 1yy – Go to Scene yy ▪ 2yy – Store Current Level as Scene yy¹ ▪ 3yy – Clear/Remove Scene yy¹ ▪ 1yyy – Set Fade Rate to yyy (steps/second)¹ ▪ 2yyy – Set Fade Time to yyy (seconds)¹ ▪ 3yyy – Set Min Level Rate to yyy (in %)¹ ▪ 4yyy – Set Max Level Time to yyy (in %)¹ ▪ 5yyy – Set Power-on Level Time to yyy (in %)¹ ▪ 6yyy – Set System-failure Level to yyy (in %)¹ 	RW	$(4*\mathbf{xx})+8$

¹ This command will overwrite ballast's permanent storage memory. Permanent storage memories have a limited rated number of writes. Therefore, intensive/repetitive use of this command will harm your ballast's permanent storage memory.

In the list, value **xx** poses as the ballast short/individual address, and takes value 0 to 63. The Point # is the modbus register number.

Additionally, IntesisBox implements two registers allowing group-based control of ballasts. See following list:

Point name	Description	Signal	Point #
Dali G xx PwrSet	Requested arc power level on group xx <ul style="list-style-type: none"> ▪ 0% (off) ... 100% / MAX level 	RW	261 + ($xx*2$)
Dali G xx Cmd	Requested command on group xx <ul style="list-style-type: none"> ▪ 0 – Set Arc Power Off ▪ 1 – Arc Power 100% ▪ 2 – Step Up ▪ 3 – Step Down ▪ 10 – Set Minimum Arc Power Level² ▪ 11 – Set Maximum Arc Power Level² ▪ 1yy – Go to Scene yy ▪ 2yy – Store Current Level as Scene yy² ▪ 3yy – Clear/Remove Scene yy² ▪ 1yyy – Set Fade Rate to yyy (steps/second)² ▪ 2yyy – Set Fade Time to yyy (seconds)² ▪ 3yyy – Set Min Level Rate to yyy (in %)² ▪ 4yyy – Set Max Level Time to yyy (in %)² ▪ 5yyy – Set Power-on Level Time to yyy (in %)² ▪ 6yyy – Set System-failure Level to yyy (in %)² 	RW	262 + ($xx*2$)

In the list, value xx poses as the group number being controlled, and takes value 0 to 15.

Additionally, IntesisBox implements two registers allowing broadcast control of all ballasts together. See following list:

Point name	Description	Signal	Point #
Dali All PwrSet	Requested arc power level to all ballasts <ul style="list-style-type: none"> ▪ 0% (off) ... 100% / MAX level 	RW	293
Point name	Description	Signal	Point #
Dali All Cmd	Requested command to all ballasts <ul style="list-style-type: none"> ▪ 0 – Set Arc Power Off ▪ 1 – Arc Power 100% ▪ 2 – Step Up ▪ 3 – Step Down ▪ 10 – Set Minimum Arc Power Level¹ ▪ 11 – Set Maximum Arc Power Level¹ ▪ 1yy – Go to Scene yy ▪ 2yy – Store Current Level as Scene yy¹ ▪ 3yy – Clear/Remove Scene yy¹ ▪ 1yyy – Set Fade Rate to yyy (steps/second)¹ ▪ 2yyy – Set Fade Time to yyy (seconds)¹ ▪ 3yyy – Set Min Level Rate to yyy (in %)¹ ▪ 4yyy – Set Max Level Time to yyy (in %)¹ ▪ 5yyy – Set Power-on Level Time to yyy (in %)¹ ▪ 6yyy – Set System-failure Level to yyy (in %)¹ 	RW	294

¹ This command will overwrite ballast's permanent storage memory. Permanent storage memories have a limited rated number of writes. Therefore, intensive/repetitive use of this command will harm your ballast's permanent storage memory.

Finally, there is a set of 4 registers reporting, in a compact way, a faulty status of each ballast in the line.

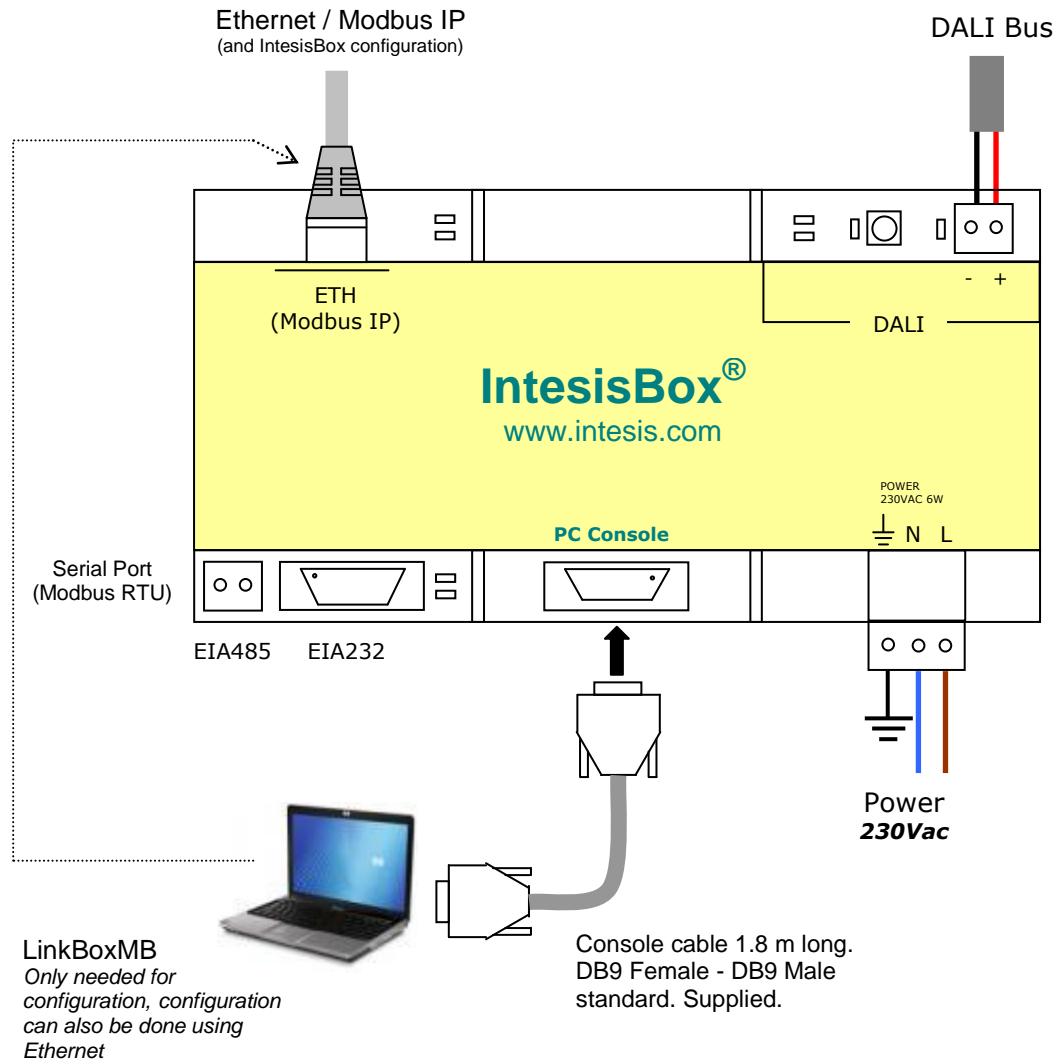
Point name	Description	Signal	Point #
Dali Err D15-00	2 byte value $b_{15}...b_0$ representing status of ballasts with individual/short addresses 0 to 15, in the following way: <ul style="list-style-type: none"> ▪ Bit b_0: <i>Status of ballast 0</i> <ul style="list-style-type: none"> ○ 0: Ballast OK ○ 1: Ballast not present in bus, ballast failure , lamp failure or not configured in database ▪ Bit b_1: <i>Status of ballast 1</i> ▪ ... ▪ Bit b_{15}: <i>Status of ballast 15</i> 	R	1
Dali Err D31-16	2 byte value $b_{15}...b_0$ representing status of ballasts with individual/short addresses 16 to 31. (b_0 relates to ballast 16, b_1 to ballast 17, ..., b_7 to ballast 31)	R	2
Dali Err D47-32	2 byte value $b_{15}...b_0$ representing status of ballasts with individual/short addresses 32 to 47. (b_0 relates to ballast 32, b_1 to ballast 33, ..., b_7 to ballast 47)	R	3
Dali Err D63-48	2 byte value $b_{15}...b_0$ representing status of ballasts with individual/short addresses 48 to 63. (b_0 relates to ballast 48, b_1 to ballast 49, ..., b_7 to ballast 63)	R	4

2. Installation and quick-setup

2.1 IntesisBox hardware

Device uses a standard enclosure allowing DIN EN60715 TH35 rail mounting. Its plastic meets standard PC UL 94 V0.

Sizes are 159mm x 105mm x 58mm.



Ensure proper space for all connectors when mounted.

The items supplied by Intesis Software for this integration are:

- IntesisBox Modbus – DALI hardware
- Console cable. Standard DB9F-DB9M cable 1.8 meter long.
- Installation sheet, containing a hard-link for *LinkBoxMB* software download and this manual.

2.2 Quick-setup

Mount IntesisBox in the desired location (follow instructions and recommendations in its installation sheet).

Next sections detail preliminary checks to perform to ensure DALI and Ethernet connectivity.

2.2.1 DALI connection setup

Connect + and – terminals of the DALI bus of your ballasts to IntesisBox' DALI port. Bus does have polarity, though most DALI ballasts are polarity insensitive.

Having your DALI ballasts powered up, you can perform a quick three-step DALI connectivity test by pressing DALI test button, at the left side of its connector on IntesisBox:

1. Pressing the button once will set your ballasts to their configured maximum arc power level. DALI test red LED next to the button will start blinking, as a way of indicating that the test has started.
2. Pressing again the button will set your ballasts OFF. DALI test LED will remain steadily ON during this stage of the test.
3. And pressing again the button will end up the test, switching DALI test LED steadily OFF and leaving your ballasts at their maximum configured arc power level.

If the button is not pressed during 30s, the test will move on to the next step, until the final step is reached (step 3 above).

While performing this test, IntesisBox will not execute any DALI command that may have been requested from its Modbus interface.

2.2.2 Ethernet connection setup

Although it is not necessary, you may want to check connectivity of your PC against the IntesisBox by means of Ethernet. This will allow you to:

- Configure IntesisBox using *LinkBoxMB* tool.
- Access Modbus server registers from a Modbus client in your PC (Modbus client software is not provided with the device)

IntesisBox comes from factory with configured IP address 192.168.100.246. *LinkBoxMB* software tool allows for changing it to the one that suits your Ethernet network configuration, while being connected to IntesisBox – by either the PC Console serial port or the Ethernet / TCP/IP connection itself.

If you need to setup a different IP address before connecting the IntesisBox to the Ethernet network, just read the *LinkBoxMB User's Manual* and you will find a proper explanation on how to do it.

In order to setup Ethernet connection of your PC and the IntesisBox, first connect suitable Ethernet cable to IntesisBox:

- Use a crossover Ethernet cable if you are connecting your PC's Ethernet adapter directly to the IntesisBox.
- Or use a straight Ethernet cable if you are to connect to the IntesisBox through a hub or switch in your LAN.

If the IP address of your PC is in the subnet 192.168.100.* you are ready to communicate with IntesisBox. If your PC has an IP address in a different subnet, you will need to add a route in Windows routing table, by doing following:

Choose "Start->Run..." and enter:

```
cmd.exe
```

This will open up a Windows console shell, with which you can add the route to the IntesisBox with following command line:

```
route add 192.168.100.246 %COMPUTERNAME%
```

In Windows Vista and Windows 7 you will need to run that command from a console shell with administration privileges. Also in these systems, you may have trouble using environment variable %COMPUTERNAME%. If this is your case, try issuing the same command changing %COMPUTERNAME% for the IP of your PC (you can get the IP from your computer with shell command `ipconfig`).

Finally, ping 192.168.100.246 from the command shell so to check that your PC can see IntesisBox in the network:

```
C:\>ping 192.168.100.246
```

```
Pinging 192.168.100.246 with 32 bytes of data:
```

```
Reply from 192.168.100.246: bytes=32 time<1ms TTL=255
Reply from 192.168.100.246: bytes=32 time<1ms TTL=255
Reply from 192.168.100.246: bytes=32 time<1ms TTL=255
Reply from 192.168.100.246: bytes=32 time=1ms TTL=255
```

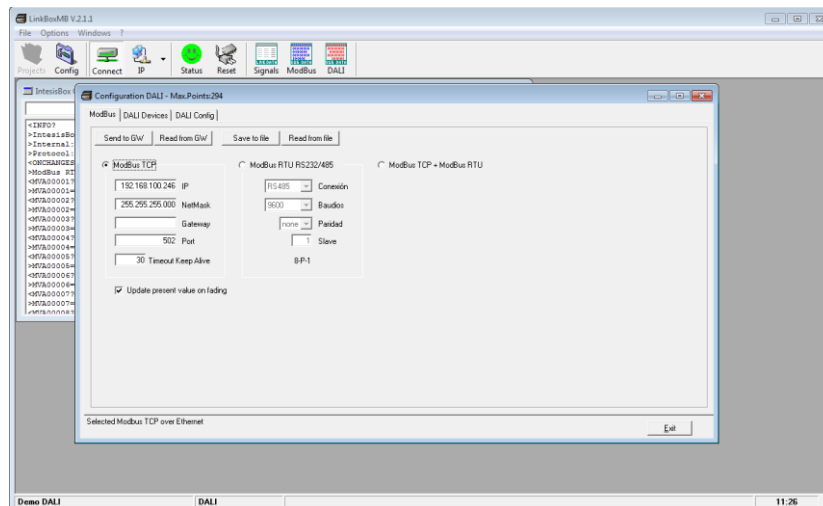
```
Ping statistics for 192.168.100.246:
```

```
    Packets: Sent = 4, Received = 4, Lost = 0 (0% loss),
    Approximate round trip times in milli-seconds:
        Minimum = 0ms, Maximum = 1ms, Average = 0ms
```

3. Editing the configuration project for DALI

3.1 IntesisBox Configuration Window

Back into *LinkBoxMB* main's window, select menu option *Configuration->IntesisBox...* to access IntesisBox configuration editor window.



There are three tabs in the configuration window:

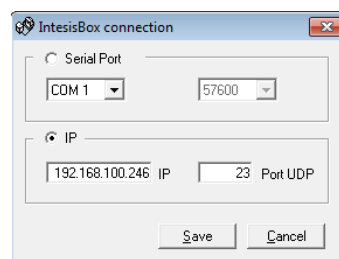
- **ModBus:** Relates to configuration of IntesisBox parameters for its ModBus TCP/RTU interface.
- **DALI Devices:** Used for the commissioning/setup of the individual/short addresses of the DALI ballasts in the bus
- **DALI Config:** It is used for the management of the set of configuration values of each ballast (min/max level, fade rate/time, group membership, ...)

In following sections their usage is explained.

3.2 Switching from Offline to Online mode

At this point you might want to change *LinkBoxMB* working mode to online – i.e. having a working link between *LinkBoxMB* and IntesisBox. This will allow you to exchange configuration values with the device, as you edit them.

In order to do so, select menu option *Configuration->Connection...* a small window showing the connection parameters will appear.

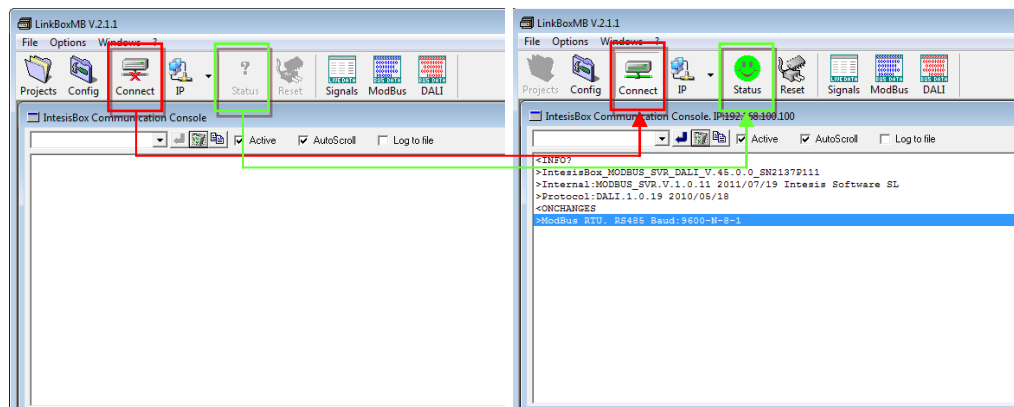


In it, you can select the communication parameters of the physical link with IntesisBox, using either a Modbus RTU EIA232/485 connection or a Modbus TCP (Ethernet) connection.

For Ethernet, default/factory value of the IP configured on IntesisBox is always 192.168.100.246. TCP Port is always 23 and shouldn't be changed.

Once done setting up suitable parameters, click *Save*.

Now, to switch *LinkBoxMB* to Online mode, click on the *Connect* button in the upper left part of the main window. Upon successful connection, status will change to Online with a green picture.



By doing that, some text will appear in the *IntesisBox Communication Console* window as shown in the picture above. This window always shows the (ASCII-based) communication between *LinkBoxMB* and IntesisBox. At the moment, it shows information on the firmware version loaded on IntesisBox and its configuration status.

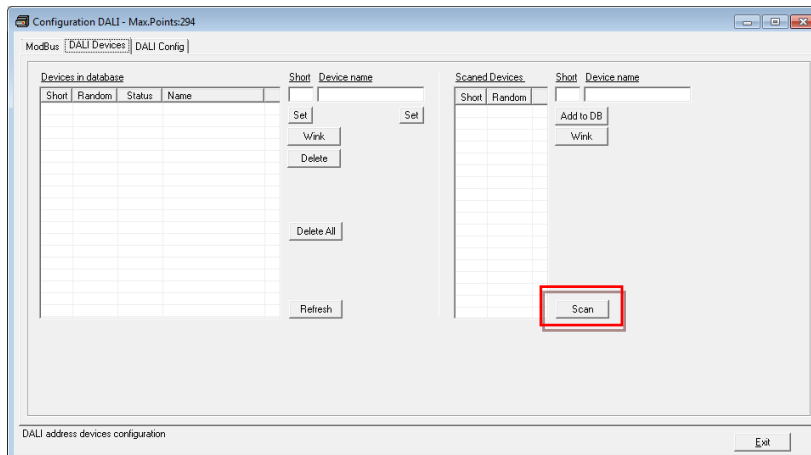
Later on, when done with your configuration work using *LinkBoxMB*, and leaving your IntesisBox device "stand-alone" in the installation it's specially important that you remember switching off the gateway by clicking the *Connect* button before disconnecting the physical cable (Ethernet or EIA232/485) from IntesisBox – otherwise, IntesisBox would remain unnecessarily in the "Online" status, trying to report debugging and configuration information to a non-existing connected PC.

Additionally, in case of using a USB-EIA232 converter, unplugging the USB converter *before* switching off the *LinkBoxMB*, may crash your system forcing you to reboot your computer.

3.3 Configuration of short addresses for DALI ballasts

First step to do for proper configuration, is detecting the ballasts present in your DALI bus, and assigning them with an individual/short address.

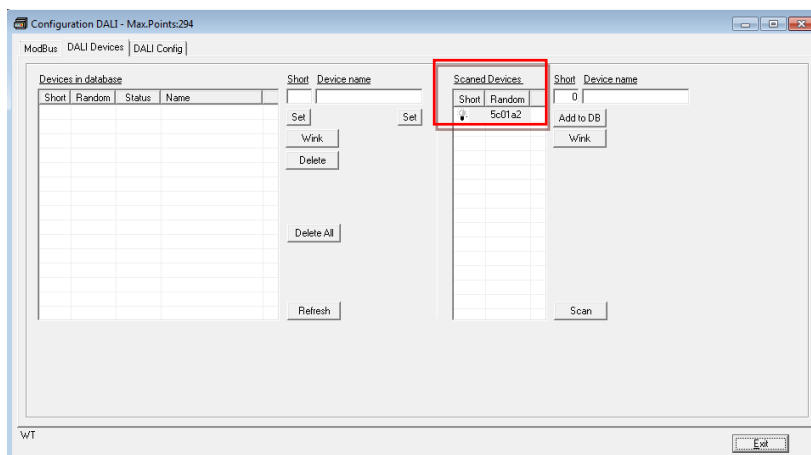
To do so, being in mode *Online* and with IntesisBox DALI configuration window, select tab *DALI devices*. Configuration window will look like the shot shown below.



You will use it to scan existing DALI ballasts in your installation, and once found, assign them with a short address.

First, press button *Scan* in the right part of the window. It will start the process of ballast scanning in the DALI bus, which will take from some seconds up to several minutes (2 or 3 minutes at most), depending on the number of ballasts in your installation.

Once scan is finished, a set of ballasts and their current address will appear in the list of *Scanned Devices*. The figure below shows the result of scanning a DALI bus with one ballast.



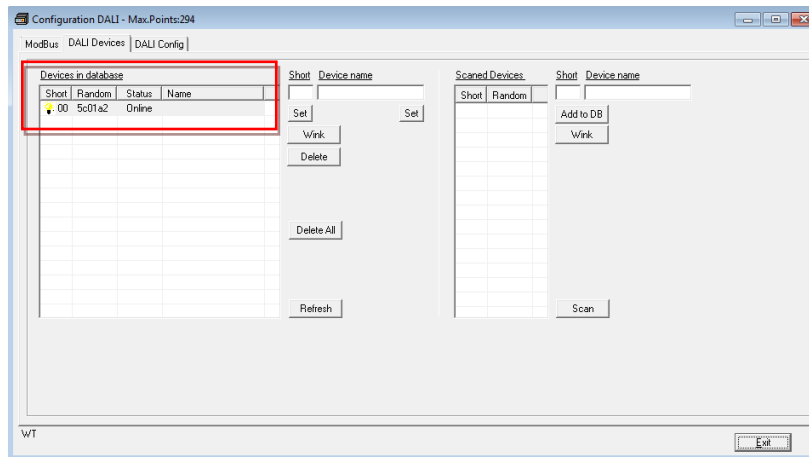
There is a field telling the Random Address of each ballast, which is a unique identifier in the bus for them, and another field telling their Short Address. It is possible and likely that your ballasts at the time have no assigned short address – in this case the Short Address field in the list will appear empty (like in the shot above).

Now you should assign a short address (ranging 0 to 63) to each of the ballasts that have been discovered in the bus. Before that, you might want to identify the physical location of each ballast, so to assign a short address based on its location in the installation. In order to be able to physically identify each ballast, select it from the list and press button *Wink*. Wink operation will send suitable DALI commands on the bus to force a change between minimum and maximum arc power level of the ballast for some seconds, so that you can find it.

Once identified and decided which address you want to assign to a particular ballast, select it from the list of scanned ballasts and fill in fields *Short* and *Device name* in the right part

of the window (text boxes in the right part of *Scanned Devices* list). *Short* stands for short/individual address, and should be a number between 0 and 63. *Device name* can be any name that is meaningful to you to identify this ballast later on. Finally, press button *Add to DB* to add the ballast to the ballast database.

This will make the ballast disappear from the list of scanned ballasts and appear in the list *Devices in Database*, like shown below.





The ballast database is the list of ballasts with assigned short address that IntesisBox continuously monitors for checking their status.

Proceed to add the remaining scanned ballasts until you have them all added into the database. Keep in mind that short addresses assigned to each of the ballasts in the channel must be unique.

Once you have a ballast in the database, you can perform following operations, using their corresponding buttons:

- Change its short DALI address (by using proper text box and button under label *Set*, next to the *Devices in database* list).
- Change the name for identifying it (also by using proper text box and button under label *Set*, next to the *Devices in database* list).
- *Wink* it, in order to test it or locate it physically.
- *Delete* it from the database – this will remove ballasts' short address from the database, and the ballast will appear in the list of *Scanned Devices* over again.
- *Delete All* ballasts from database – same as previous option, but for all ballasts in the database.
- *Refresh* the database. This option retrieves the database from a working IntesisBox you have just connected *LinkBoxMB* to, so to know the list of addressed ballasts it is monitoring.

After adding ballasts into the database, or Refreshing the database itself, you will also get feedback on the current communication status of the ballast:

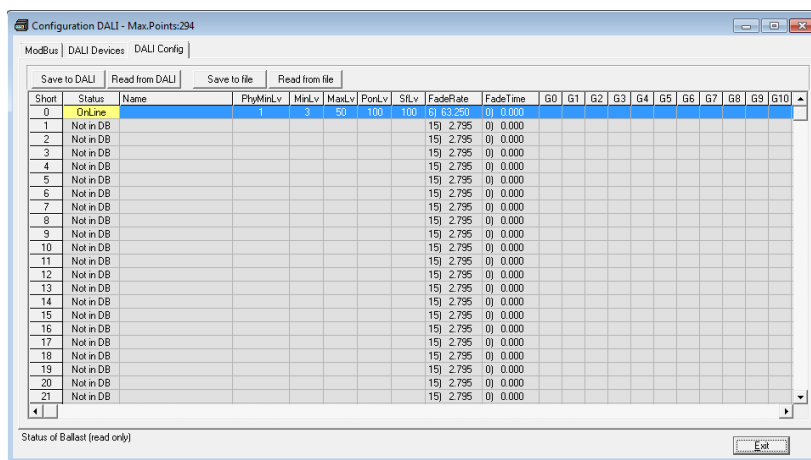
- Ballast is *Online* when IntesisBox detects it in the bus (i.e., ballast answers DALI poll requests triggered from IntesisBox). Shown also by icon  in field for short address.
- Ballast is *Offline* when IntesisBox does not detect it in the bus (i.e., ballast does not answer DALI poll requests triggered from IntesisBox). Shown also by icon  in field for short address.

Current status of the ballasts though, is not updated automatically – you need to press button *Refresh* to obtain it at the moment you want to check it.

Remember that DALI ballasts locally keep their configuration parameters and short address in their own permanent storage memory, as well as does the IntesisBox itself – in particular, this means that if you physically disconnect a ballast from the DALI bus controlled by the IntesisBox, the ballast will still keep its short address and configuration values.

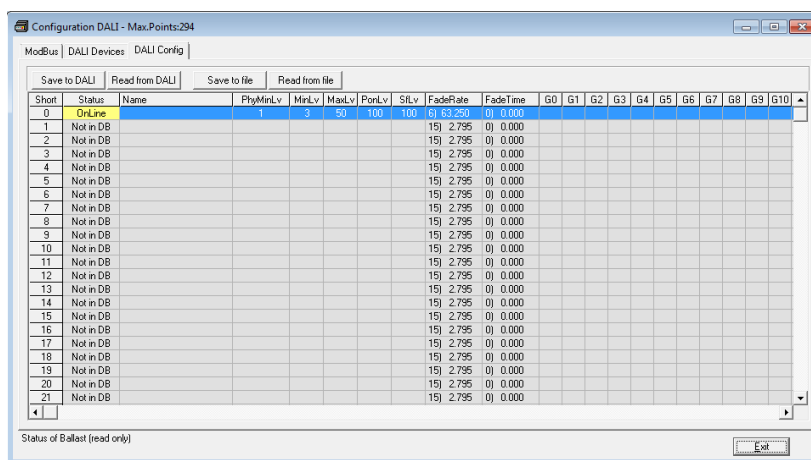
3.4 Ballast configuration values

The configuration parameters for the ballasts are accessible by clicking on tab *DALI Config* in *IntesisBox Configuration* window.



At first, you will get a list of ballasts 0 to 63 (ordered by their short address) and an indication if they are Online or Offline. Press button *Read from DALI* to obtain current configuration of all ballasts present in database.

Figure above shows the configuration grid as it appears when first accessing this tab, figure below shows how it looks like after having read ballast configuration parameters from the bus.



In this window you can change the configuration parameters for all ballasts, in the following manner:

- Change its minimum arc power level (*MinLv*), maximum arc power level (*MaxLv*), power-on level (*PonLv*) or system-failure level (*SflLv*) by double clicking its corresponding text box and editing its value. Place a value between ballast's physical minimum level (*PhyMinLv*) and 100%.
- Change its *fade rate* or *fade time* by right clicking its corresponding cell and selecting the value from the contextual menu.
- Add or remove the ballast from one of the 16 possible groups (values G0 to G15) by right-clicking the corresponding cell and selecting the group number. It's also possible to change group membership by simply double-clicking the cell corresponding to the group you want the ballast to be added to/removed from.
- Change the level for each of the 16 possible scenes of the ballast by double clicking its corresponding text box S0 to S15, and entering a value between ballast's physical minimum level (*PhyMinLv*) and maximum arc power level (*MaxLv*). Leave this cell empty if you don't want the ballast to have an assigned value for a particular scene S0 to S15 (default).

Change of a certain parameter value for several ballasts at the same time is possible, by selecting multiple cells under the same title – use shift-holding selection or keep mouse button pressed while moving the mouse through all the rows you want to change. Then right-click the selection and change the value from the contextual menu.

Physical minimum level of a ballast is the minimum dim level that the ballast is able to be dimmed to, as per its design. This value is defined by its manufacturer and cannot be changed.

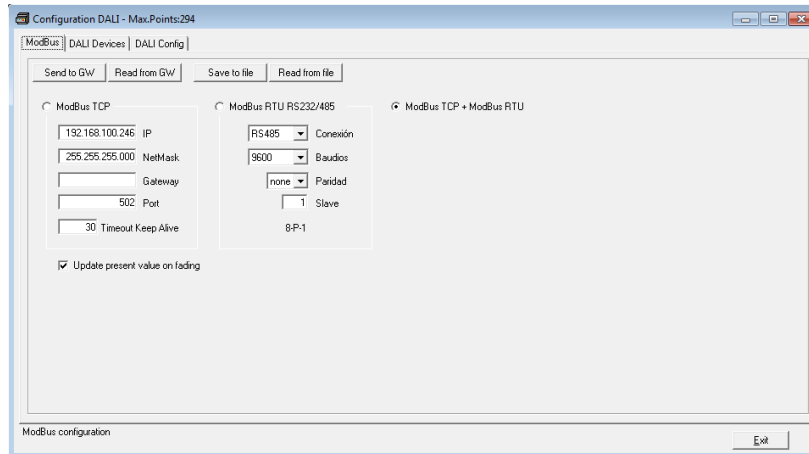
Once done with the changes, they need to be sent to the bus. I.e., the configuration will not take effect until ballasts in the installation are effectively programmed with the chosen values. To do so, click button *Save to DALI*. This will send all configuration values to each of the ballasts, so that they keep their values in their own permanent storage memory.

At this point, configuration of the ballasts can and should be saved to the project, by pressing button *Save to PC*. This will update local file *DALI.dat* of your project on hard-disk, keeping a record of the configuration you have just edited or sent to the ballasts.

Note that you can edit any of the rows in this window, even if its corresponding ballast is not present in IntesisBox' database. This is so, so that you can edit a whole configuration for the ballasts without being in the installation/being not connected in *LinkBoxMB*. Thus, being connected or not, you can press buttons *Save to PC* and *Read from PC* to store and recover a configuration from your project folder.

3.5 Modbus configuration

Modbus TCP and RTU configuration parameters are accessed in tab *Modbus* of *IntesisBox Configuration* window.



If *Modbus TCP* is selected, then:

- *IP address* of IntesisBox at its Ethernet port, which will be used for both Modbus TCP and *LinkBoxMB* access to the device. Default is 192.168.100.246.
- *NetMask* indicating the IP address range. Default is 255.255.255.0.
- *Default gateway* of your IP network. Is left empty by default.
- *TCP port* that will be used for Modbus TCP. Default is 502.
- *Timeout Keep Alive*: Enter the Keep Alive Timeout (in seconds). This is the time without Modbus TCP traffic after which IntesisBox will send a Keep Alive packet to the master(s) connected to it, this is to maintain alive the TCP. Default is 30s.
- *Update present value on fading* check:
 - If this check-box is enabled, Modbus signal *DALI PwrLvl* for each installed ballast will be always updated (even while the ballast is fading its own arc power level value). In section 1.2 you can find a the list of Modbus registers associated to each ballast.
 - If this check-box is not enabled, Modbus signal *DALI PwrLvl* will not be updated for a ballast that is performing a fading (i.e., arc power value will only be shown when the ballast is not fading). In section 1.2 you can find a the list of Modbus registers associated to each ballast.

Once you have changed these parameters, you can and send them to IntesisBox with the button *Send to GW*, and/or store them in your PC (in project's folder) using button *Save to file*.

Take into account that, if you change the IP parameters of the IntesisBox, and you are holding an Ethernet/IP connection with it for communicating with *LinkBoxMB*, you will need to update *LinkBoxMB*'s connection parameters to match accordingly (see section 3.2).

If *Modbus RTU RS232/485* is selected, then:

- *Connection*: Select the port to use (RS232 or RS485).
- *Baud rate*: Select the baud rate to use.
- *Parity*: Select the parity.
- *Slave*: Enter the Modbus slave number for IntesisBox.

If *Modbus TCP + Modbus RTU* is selected, then:

Both Modbus TCP and Modbus RTU connections will be active with the parameters configured on each of them.

You can also read the actual configuration for these parameters in IntesisBox using button *Read from GW*, or read your currently stored project configuration (from file *DALI.ini* in project folder) using button *Read from file*.

4. Mechanical & electrical characteristics

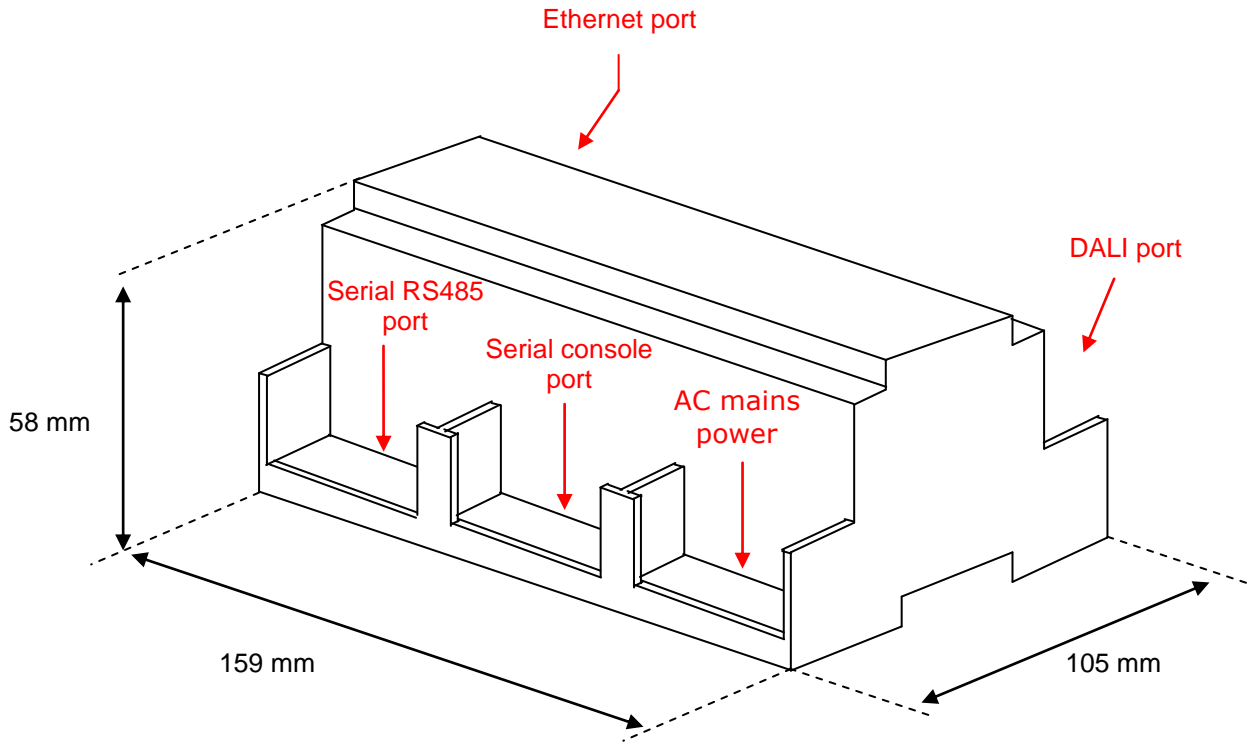
Enclosure	Plastic, type PC (UL 94 V-0). Dimensions: 159mm 105mm x 58mm.
Color	Light Grey / RAL 7035.
Supply Voltage	230Vac +/-10% 6W (3-pole plug-in terminal block – line, neutral and earth)
Mounting	Wall. DIN rail EN60715 TH35.
DALI bus power source	15Vdc +/-2% 250mA. (DALI bus is powered from IntesisBox)
DALI port	1 x DALI electrically isolated (2-pole plug-in terminal block).
Ethernet port (Modbus IP, device config)	1 x Ethernet 10BT RJ45.
Modbus RTU ports	1 x Serial RS232 (DB9 male DTE). 1 x Serial RS485 (Plug-in screw terminal block, 2 poles).
LED indicators	1 x Power indicator. 2 x DALI activity (Tx, Rx). 2 x Ethernet link & activity (LNK, ACT). 2 x Modbus RTU port activity (Tx, Rx). 1 x DALI bus power 1 x DALI test ¹
Push buttons	1 x DALI test ¹
Console port	EIA232. DB9 female connector (DCE).
Configuration	Via Ethernet or serial console port. ²
Firmware	Allows upgrades via console port.
Operational temperature	0°C to +60°C
Operational humidity	25-90% at 50°C, non condensing
Protection	IP20 (IEC60529).
RoHS conformity	Compliant with RoHS directive (2002/95/CE).
Certifications	CE

¹ DALI test push-button and LED are meant to perform a quick test of your DALI line and connected ballasts.

² Standard cable DB9 male-DB9 female 1,8 meters long is supplied with the device for connection to a PC COM port for configuring and monitoring the device using the serial port (Ethernet is also possible). The configuration software, compatible with Windows[®] operating systems, is also supplied.

5. Dimensions

External dimensions



Free space recommended in the install location of the device, with spacing enough for external connections.

